

NBC TOWER



MOVE-IN READY SANCTUARY SUITES



LEASING INFORMATION

KATIE STEELE

+1 312 881 7062 | katie.steele@transwestern.com

ERIC MYERS

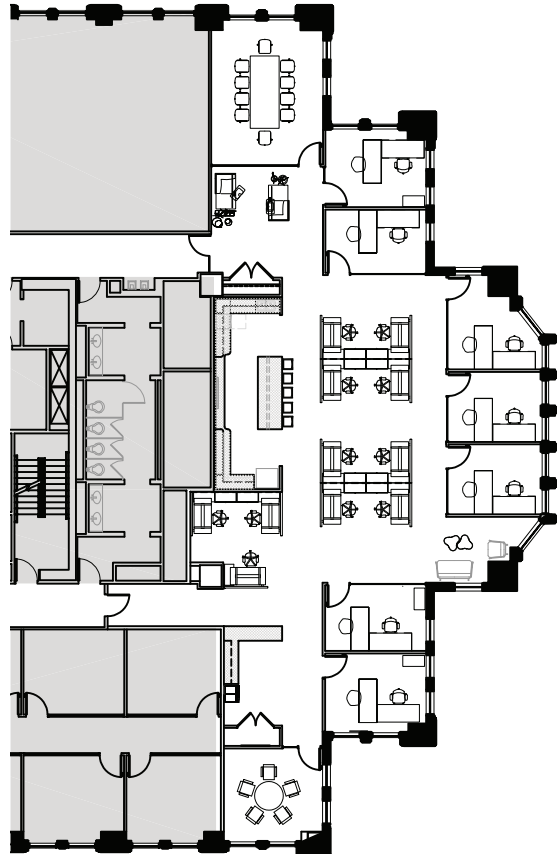
+1 312 881 7017 | eric.myers@transwestern.com

DiscoverYourSanctuary.com



SANCTUARY SUITE 2520

4,962 SF



7 private offices
Open seating for 11

10 person conference room
1 huddle room

High-end kitchenette

LEASING INFORMATION

KATIE STEELE

+1 312 881 7062 | katie.steele@transwestern.com

ERIC MYERS

+1 312 881 7017 | eric.myers@transwestern.com

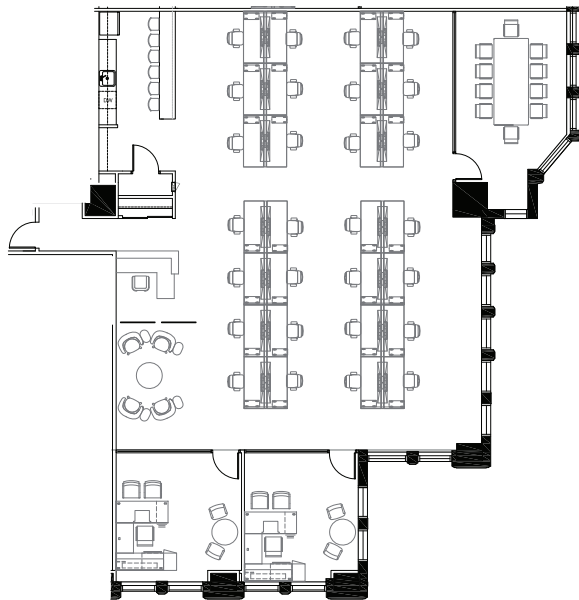
DiscoverYourSanctuary.com



SANCTUARY SUITE 1740

3,692 SF

AVAILABLE DECEMBER 2024



Fully furnished
2 private offices
Open seating for 32
10 person conference room
Kitchen

LEASING INFORMATION

KATIE STEELE

+1 312 881 7062 | katie.steele@transwestern.com

ERIC MYERS

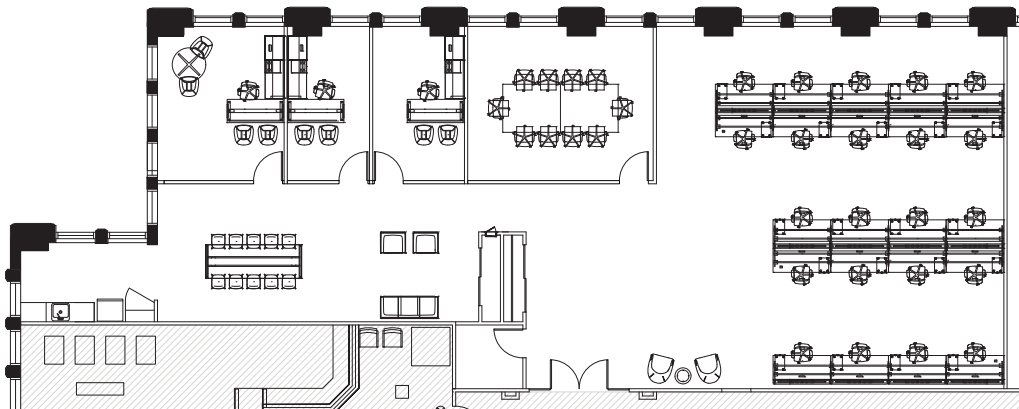
+1 312 881 7017 | eric.myers@transwestern.com

DiscoverYourSanctuary.com

NBC TOWER



SANCTUARY SUITE 2050 4,145 SF



Fully furnished
3 private offices

Open seating for 22
10 person conference room

Collaborative working area
High-end kitchenette

LEASING INFORMATION

KATIE STEELE

+1 312 881 7062 | katie.steele@transwestern.com

ERIC MYERS

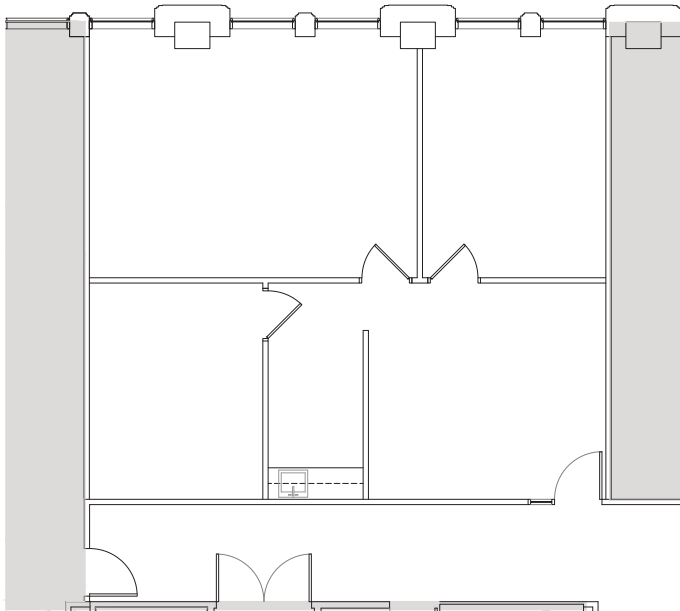
+1 312 881 7017 | eric.myers@transwestern.com

DiscoverYourSanctuary.com



SANCTUARY SUITE 2755

1,298 SF



Reception
3 private offices
Kitchenette

LEASING INFORMATION

KATIE STEELE

+1 312 881 7062 | katie.steele@transwestern.com

ERIC MYERS

+1 312 881 7017 | eric.myers@transwestern.com

DiscoverYourSanctuary.com

NBC TOWER



FULL FLOOR AVAILABLE WITH 360° VIEWS

SUITE 1900 - 22,900 SF



LEASING INFORMATION

KATIE STEELE

+1 312 881 7062 | katie.steele@transwestern.com

ERIC MYERS

+1 312 881 7017 | eric.myers@transwestern.com

DiscoverYourSanctuary.com



BUILDING AMENITIES

RESTAURANTS

- *Cityfront Cafe*: daily hot bar, full soup and salad bar, grab-n-go options, and beer & wine
- *espressamente illy*: first of its kind in Chicago serving Italian coffee, pastries, and sandwiches
- Catering services available
- 24-hour lounge with vending

FITNESS CENTER

- Recently renovated, enhanced and expanded
- Exclusive for tenants
- State-of-the-art Precor equipment
- Newly installed Peloton Bikes
- Locker room with showers and towel service
- Flat-screen television monitors
- Free WiFi access for all members

CONFERENCE CENTER

- 2 separate full-service conference rooms
- Total capacity is 56 individuals (Board Room: 16, Training Room: 40)
- Lobby check-in and lounge area
- Caterer-friendly kitchen
- Wifi and audio/visual equipment
- Dramatic lake, river, and city views

PARKING

- In-building heated parking for 230 cars
- Exterior surface parking for 469 cars
- Daily, monthly and hourly parking available
- Early Bird, Evening and Weekend rate discounts
- Garage services: complimentary windshield solvent fill, battery starting and tire inflating
- Accessible via Lower Michigan Avenue

THE GOLF CLUB

- Brand new lounge with exclusive usage for NBC Tower tenants
- State-of-the-art full swing golf simulator
- Lounge includes wet bar, televisions, music system, and comfortable seating

LEASING INFORMATION

KATIE STEELE

+1 312 881 7062 | katie.steele@transwestern.com

ERIC MYERS

+1 312 881 7017 | eric.myers@transwestern.com

DiscoverYourSanctuary.com