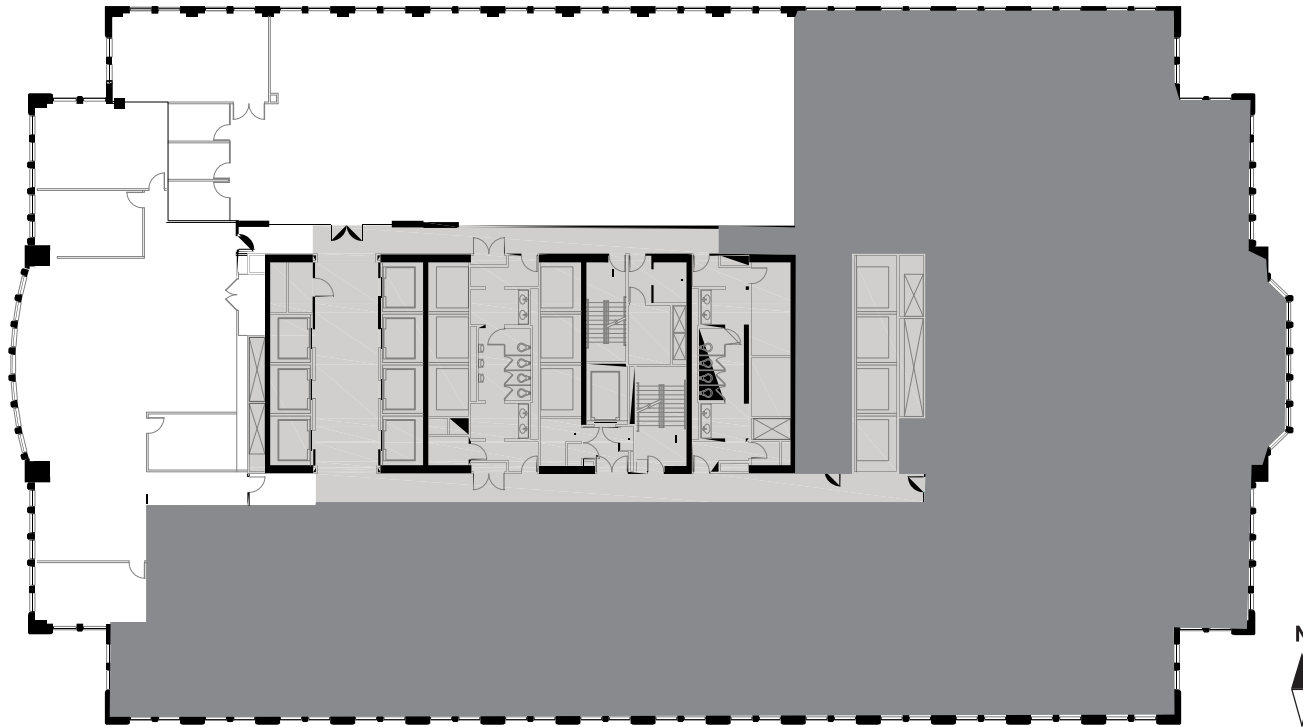


# SUITE 975

10,568 RSF



**ERIC MYERS**

+1 312 881 7017  
[eric.myers@transwestern.com](mailto:eric.myers@transwestern.com)

**KATIE STEELE**

+1 312 881 7062  
[katie.steele@transwestern.com](mailto:katie.steele@transwestern.com)

**NBC  
TOWER**

**TRANSWESTERN**

METROPOLIS  
Investment Holdings Inc.