

**INTRODUCING  
THE GEM OF THE SKYLINE**

# **THE PENTHOUSE AT NBC TOWER**

## **FOR THE FIRST TIME—A UNIQUE OPPORTUNITY AWAITS**

Step into an extraordinary piece of Chicago's architectural history with the unveiling of the Penthouse at NBC Tower. Perched majestically at the top of the tower on **floors 33-37**, this prestigious office space spans an impressive **78,000 square feet** and will be available **January 2026**.

## **A SYMPHONY OF PANORAMIC BEAUTY**

Imagine your business flourishing in a space where your windows frame an unprecedented vista of Lake Michigan and the Chicago River. These sights are a daily testament to the grandeur and inspiration that only such an elevated perspective can provide.

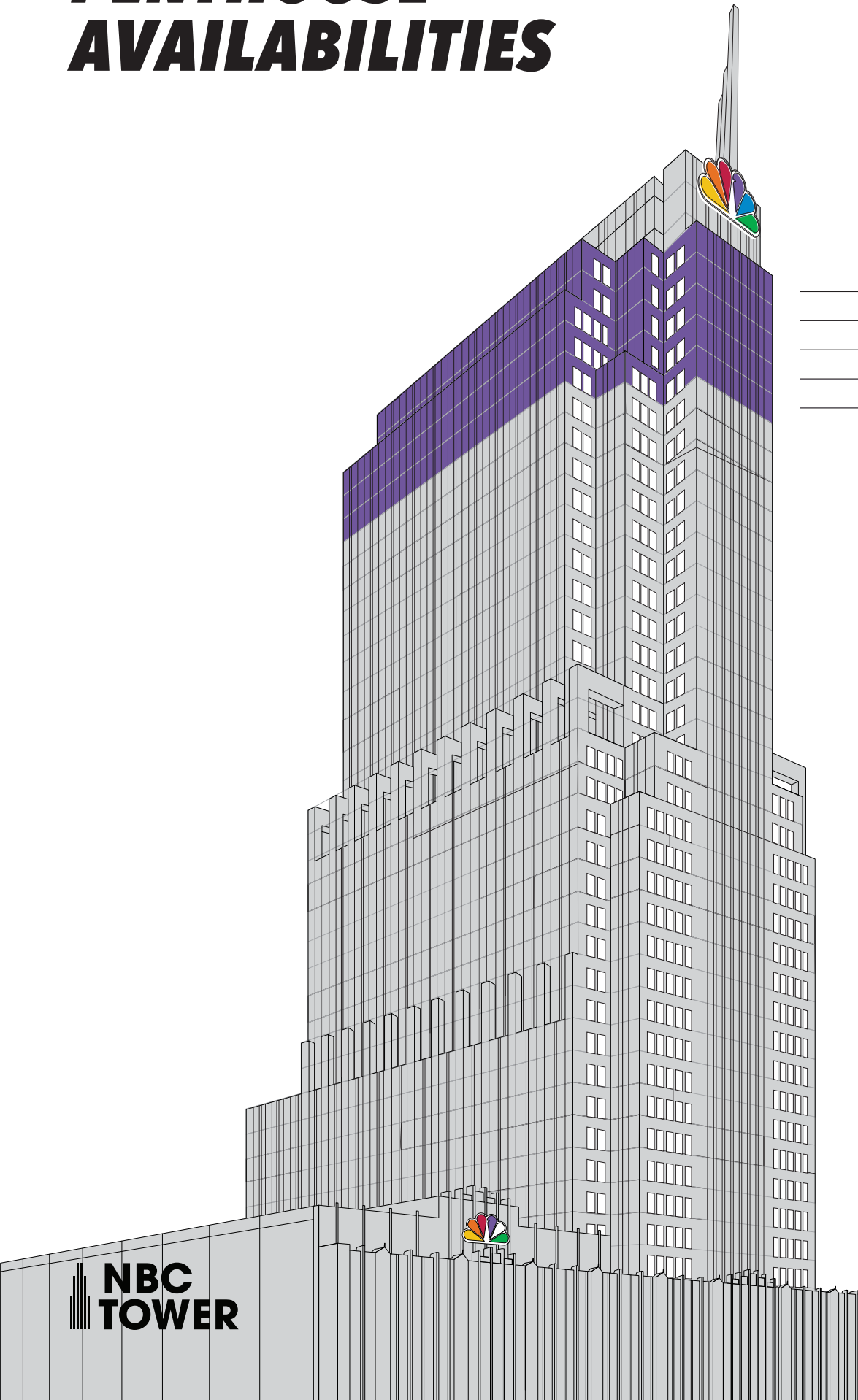
## **ELEVATE YOUR AMBITION**

This is not just office space; it's a statement. It's the first time this coveted penthouse has been offered since NBC Tower's completion, making it a truly rare opportunity. Seize the chance to elevate your business to new heights, both literally and figuratively, in a setting that exudes sophistication and success.

Discover the pinnacle of professional environments at NBC Tower's Penthouse - where the sky is not the limit...but the beginning.



# PENTHOUSE AVAILABILITIES



AVAILABLE IN JAN 2026

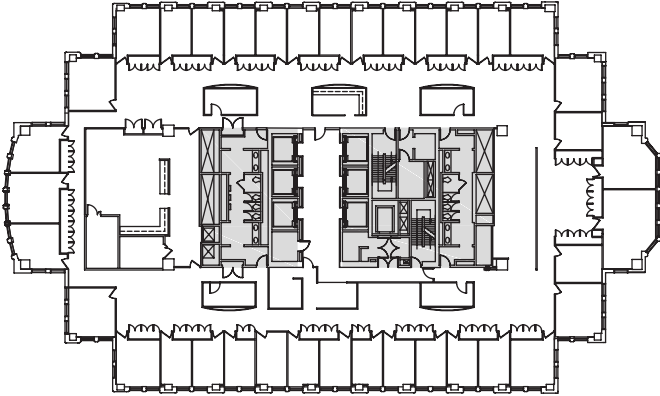
- FLOOR 37 | 8,184 SF
- FLOOR 36 | 15,376 SF
- FLOOR 35 | 17,967 SF
- FLOOR 34 | 17,967 SF
- FLOOR 33 | 18,580 SF

**NBC  
TOWER**

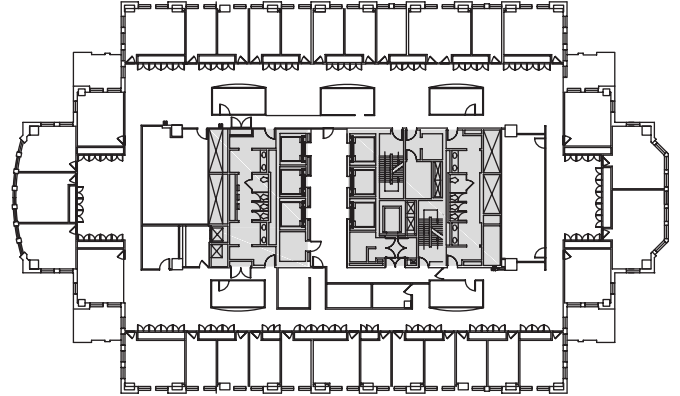


# PENTHOUSE FLOORPLANS

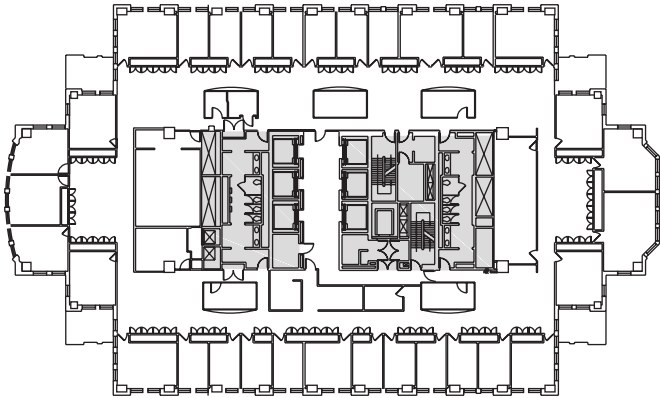
## 33<sup>RD</sup> FLOOR



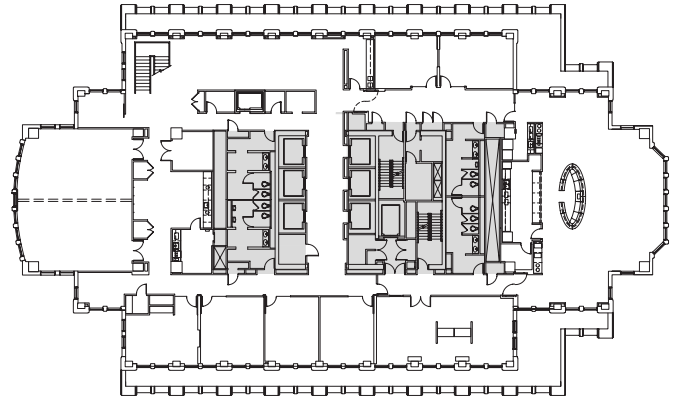
## 34<sup>TH</sup> FLOOR



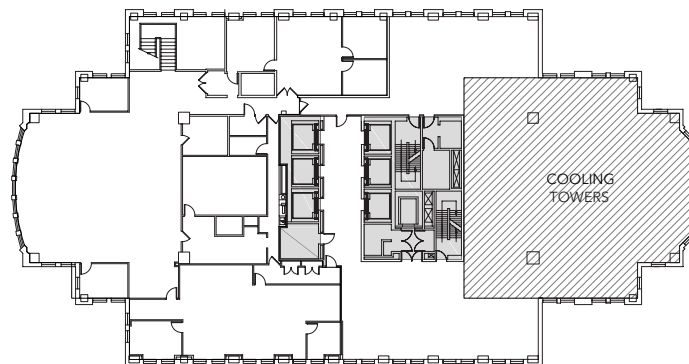
## 35<sup>TH</sup> FLOOR



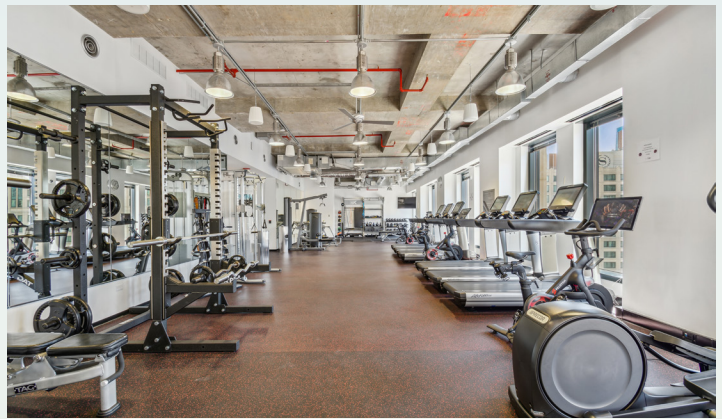
## 36<sup>TH</sup> FLOOR



## 37<sup>TH</sup> FLOOR







**BUILDING AMENITIES**



Cityfront Cafe



espressamente illy



Conference Center



Fitness Center



Golf Simulator



On-site Parking

**LEASING:** KATIE STEELE // [katie.steele@transwestern.com](mailto:katie.steele@transwestern.com)  
ERIC MYERS // [eric.myers@transwestern.com](mailto:eric.myers@transwestern.com)