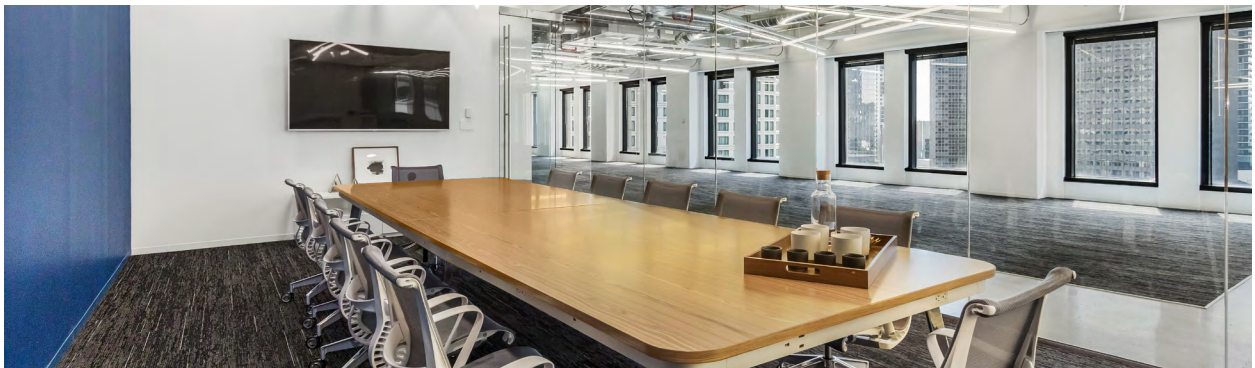


MOVE-IN READY SANCTUARY SUITES



LEASING INFORMATION

ERIC MYERS

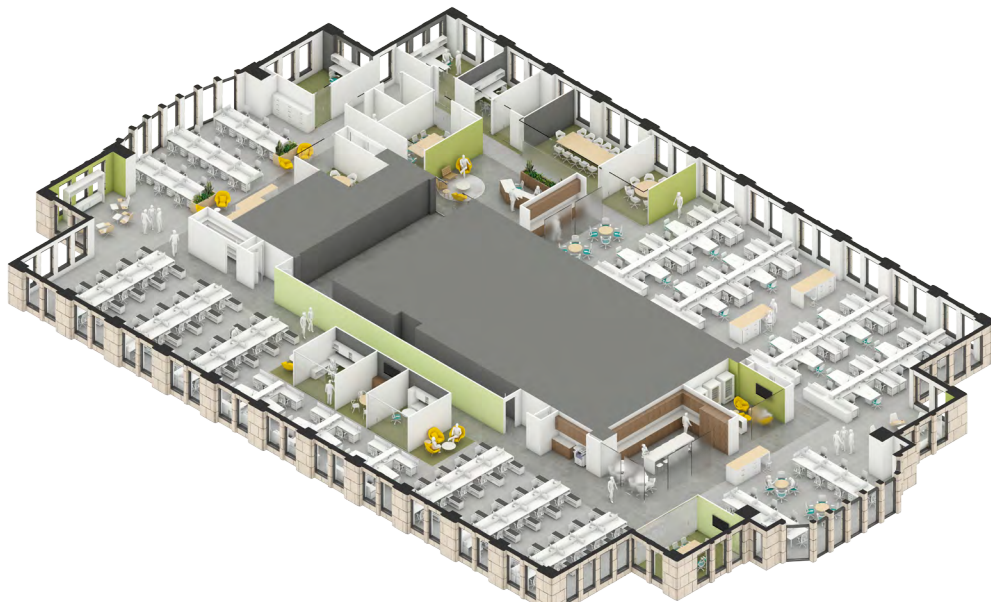
+1 312 881 7017 | eric.myers@transwestern.com

KATIE STEELE

+1 312 881 7062 | katie.steele@transwestern.com

FULL FLOOR AVAILABLE WITH 360° VIEWS

SUITE 1900 - 22,902 SF



LEASING INFORMATION

ERIC MYERS

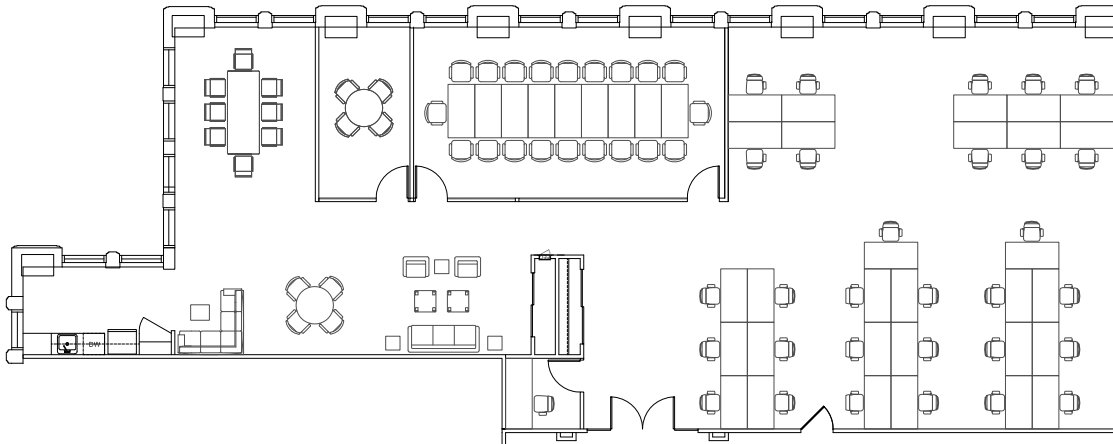
+1 312 881 7017 | eric.myers@transwestern.com

KATIE STEELE

+1 312 881 7062 | katie.steele@transwestern.com

SANCTUARY SUITE 2050

4,145 SF



Open seating for 30
20 Person conference room
8 Person conference room
High-end kitchenette

LEASING INFORMATION

ERIC MYERS

+1 312 881 7017 | eric.myers@transwestern.com

KATIE STEELE

+1 312 881 7062 | katie.steele@transwestern.com



BUILDING AMENITIES

RESTAURANTS

- *Cityfront Cafe*: made-to-order breakfast and lunch, grab-n-go and outdoor seating
- *espressamente illy*: first of its kind in Chicago serving Italian coffee, pastries, sandwiches, salads and evening cocktails
- Catering services available
- 24-hour lounge with vending
- Weekly pop-up restaurant partners

FITNESS CENTER

- Recently renovated, enhanced and expanded
- Exclusive for tenants
- State-of-the-art Precor equipment
- Newly installed Peloton Bikes
- Locker room with showers and towel service
- Flat-screen television monitors
- Free WiFi access for all members

CONFERENCE CENTER

- 2 separate full-service conference rooms
- Accommodating groups from 8 to 50
- Lobby check-in and lounge area
- Caterer-friendly kitchen
- Wifi and audio/visual equipment
- Dramatic lake, river, and city views

PARKING

- In-building heated parking for 232 cars
- Exterior surface parking for 490 cars
- Daily, monthly and hourly parking available
- Early Bird, Evening and Weekend rate discounts
- Garage services: car wash, detailing, complimentary windshield solvent fill, battery starting and tire inflating
- Accessible via Lower Michigan Avenue

LEASING INFORMATION

ERIC MYERS

+1 312 881 7017 | eric.myers@transwestern.com

KATIE STEELE

+1 312 881 7062 | katie.steele@transwestern.com