



# DISCOVER YOUR SANCTUARY

 **NBC  
TOWER**



# NBC TOWER

---

**NBC Tower stands as a beacon of thoughtful, postmodern architecture in a world-class location. Tucked in behind the hustle and bustle of Michigan Avenue, the building presides over an expansive 50-acre development that boasts intimate views of the river, lakefront and skyline. And yet, a world's worth of urban accommodations lie in wait steps away. NBC Tower is ideally situated, linking Chicago's Near North Side to the Loop. Clients and visitors alike will be in awe of the quiet respite intrinsic to this Chicago icon.**

---

*RBA 896,770 SF*  
*Stories 36*  
*Class A*  
*Year Built 1989 / R. 2018*

*Owner Metropolis Investment Holdings*  
*Leasing Transwestern*  
*Management JLL*

**Discover Your Sanctuary**  
[www.nbctower.com](http://www.nbctower.com)





# BUILDING AMENITIES

Renovated in 2018



## RESTAURANTS

- **Cityfront Cafe:** made-to-order breakfast and lunch, grab-n-go and outdoor seating
- **espressamente illy:** first of its kind in Chicago serving Italian coffee, pastries, sandwiches, salads and evening cocktails
- Catering services available
- 24-hour lounge with vending
- Weekly pop-up restaurant partners

## THE ROOM

- Amenity center located on the 20th floor, overlooking Lake Michigan
- Tenant-exclusive lounge, wet bar, and event venue
- Wine and spirits cabinet
- Soundproof room with musical instruments including a drum set and electric guitar

## FITNESS CENTER

- Recently renovated, enhanced and expanded
- Exclusive for tenants
- State-of-the-art Precor equipment
- Newly installed Peloton Bikes

- Locker room with showers and towel service
- Flat-screen television monitors
- Free WiFi access for all members

## CONFERENCE CENTER

- 2 separate full-service conference rooms
- Accommodating groups from 8 to 50
- Lobby check-in and lounge area
- Caterer-friendly kitchen
- Wifi and audio/visual equipment
- Dramatic lake, river, and city views

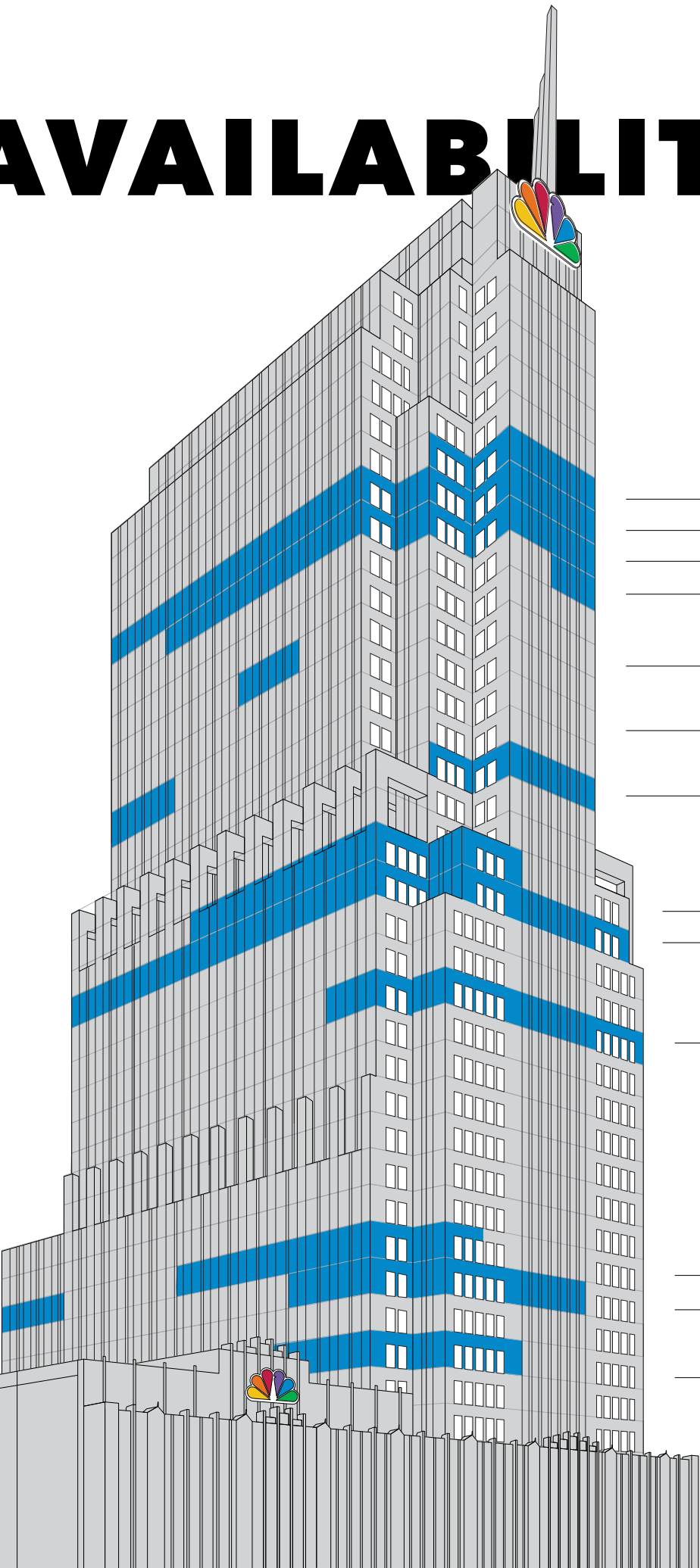
## PARKING

- In-building heated parking for 232 cars
- Exterior surface parking for 490 cars
- Daily, monthly and hourly parking available
- Early Bird, Evening and Weekend rate discounts
- Garage services: car wash, detailing, complimentary windshield solvent fill, battery starting and tire inflating
- Accessible via Lower Michigan Avenue

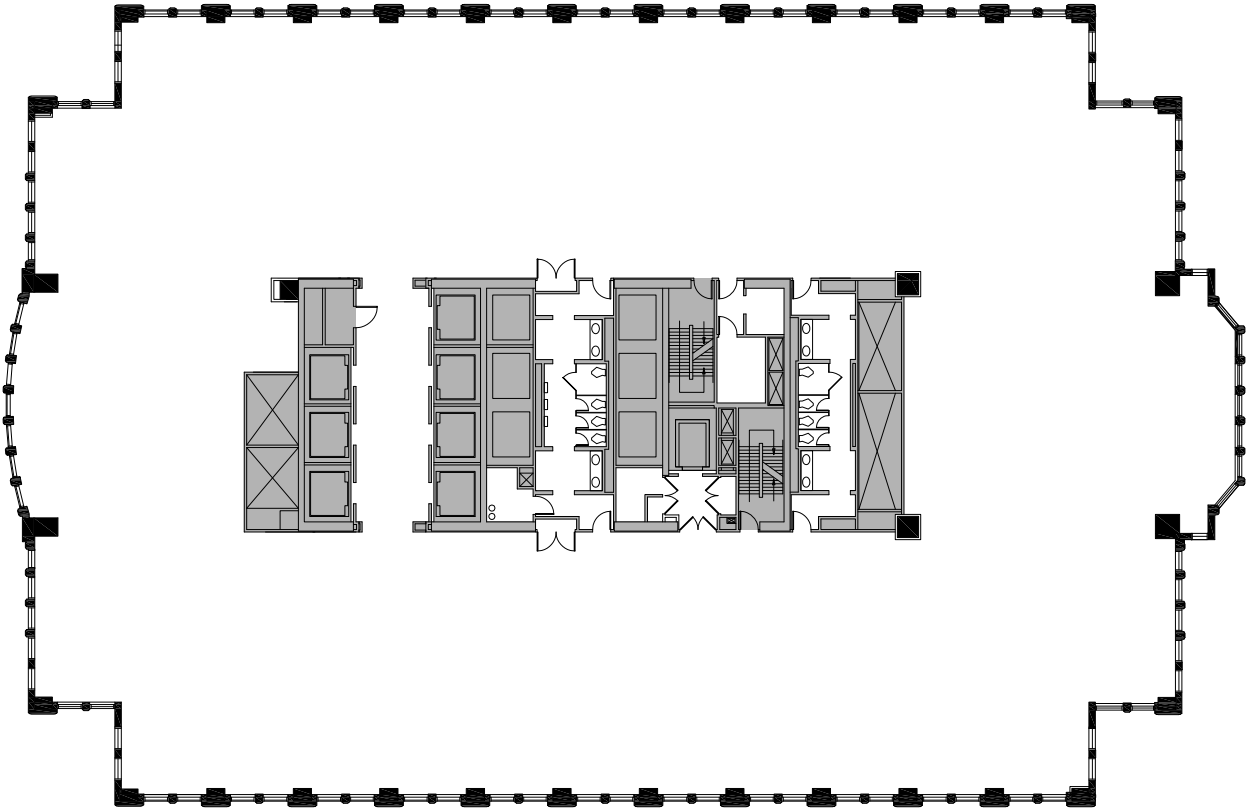




# AVAILABILITIES



- **FLOOR 32** | 3,366 SF
- **FLOOR 31** | 18,422 SF
- **FLOOR 30** | 18,518 SF
- **FLOOR 29** | 3,282 SF
- **FLOOR 27** | 1,298 SF
- **FLOOR 25** | 4,935 SF
- **FLOOR 23** | 18,186 SF
- **FLOOR 20** | 5,377 SF
- **FLOOR 19** | 22,902 SF
- **FLOOR 16** | 5,769 SF
- **FLOOR 09** | 14,188 SF
- **FLOOR 08** | 8,273 SF
- **FLOOR 06** | 2,240 SF

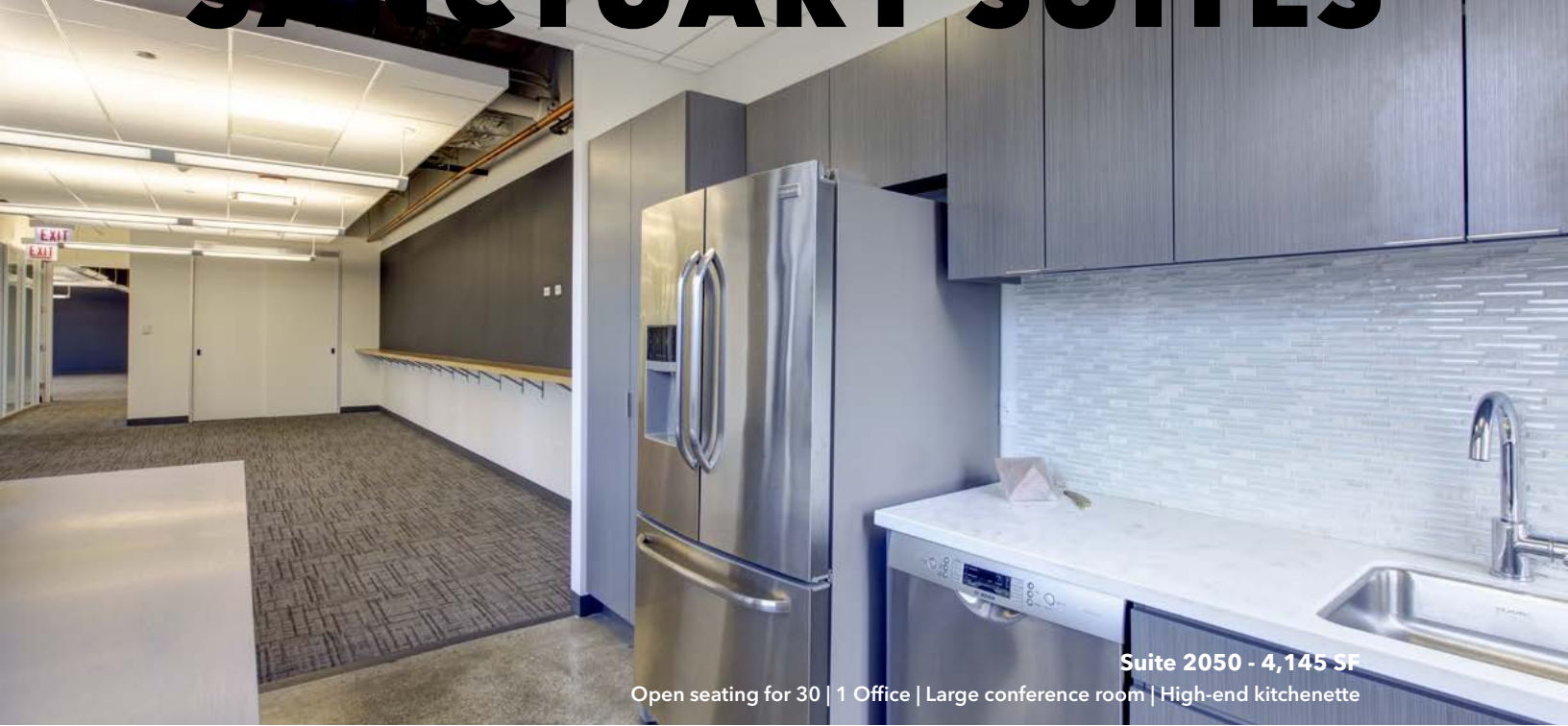


## TYPICAL FLOORPLATE

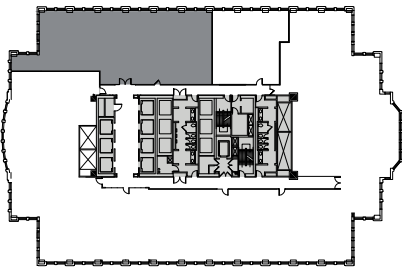
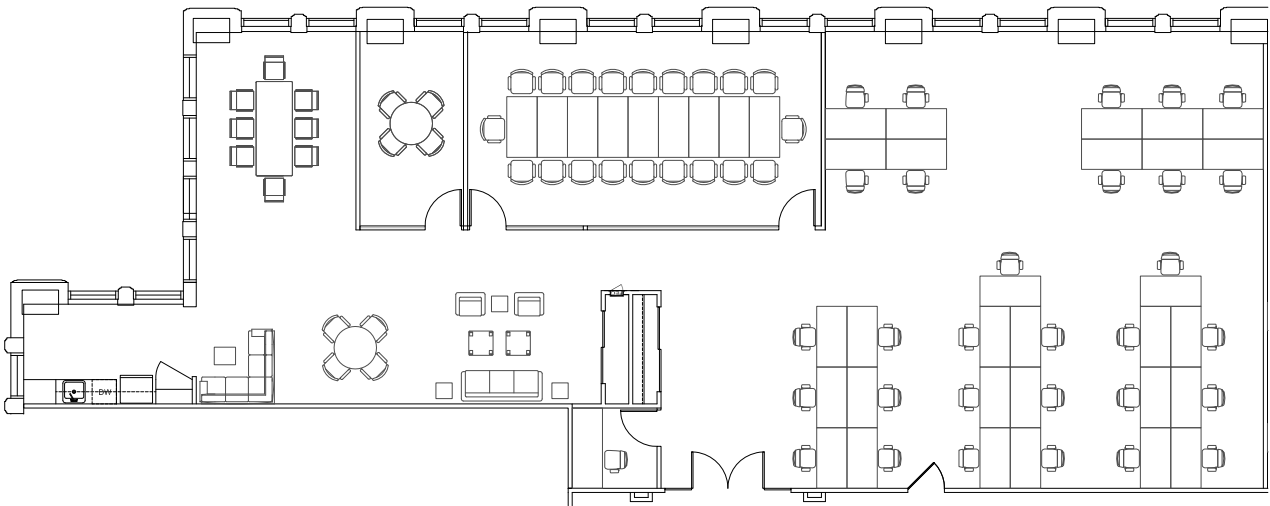
Nothing stands in your way from the awe-inspiring views from within. Free yourself from the constraints of columns, and embrace the freedom of true space flexibility.

- 18,000 - 30,000 SF floorplates
- 9-foot finished ceiling height
- Ample power
- Redundant fiber

# ONE-OF-A-KIND SANCTUARY SUITES



## SANCTUARY SUITE 2050 4,145 SF



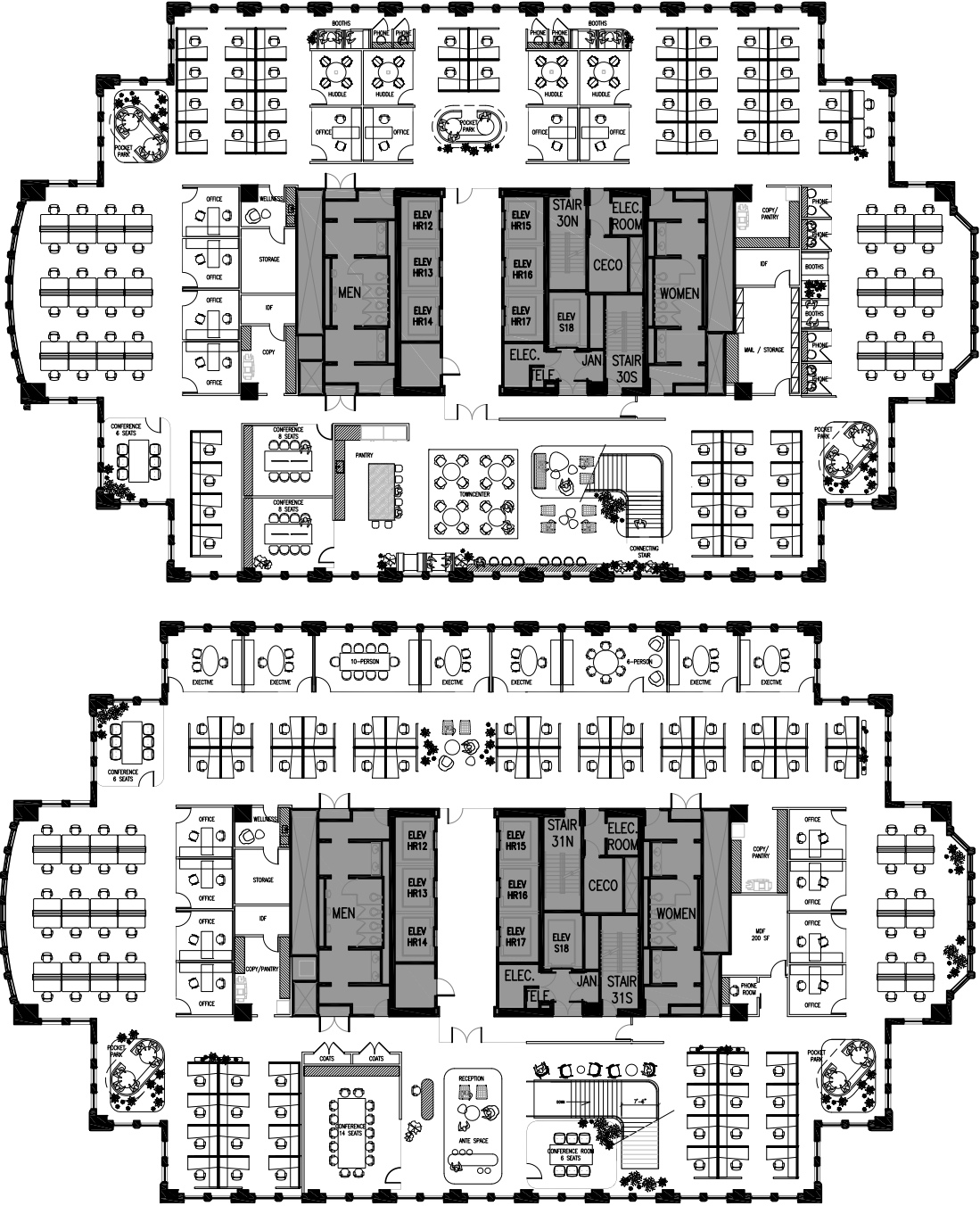


# RARE TWO-FLOOR OPPORTUNITY



CONCEPTUAL RENDERINGS

## FLOORS 30 & 31 36,940 SF



CLICK TO VIRTUALLY VIEW OUR LARGEST AVAILABILITY



# AREA AMENITIES

Get here by car, by bike, by train, by bus, or by boat. Indulge in the pulsing city life of the Magnificent Mile and River North, all within a blink of an eye. Be here, connected to acclaimed restaurants, world-class shopping and global talent.

### RESTAURANTS

- 01 Cityfront Cafe
- 02 expressamente illy
- 03 Starbucks
- 04 Bellwether
- 05 Shula's Steakhouse
- 06 Michael Jordan's Steakhouse
- 07 Yolk
- 08 Volare Ristorante Italiano
- 09 Texas de Brazil
- 10 Bandera
- 11 Purple Pig
- 12 Lizzie McNeil's
- 13 Capital Grill
- 14 Cupitol Coffee & Eatery
- 15 Dollop Coffee
- 16 LYFE Kitchen
- 17 Joe's Seafood, Prime Steak & Stone Crab
- 18 Eataly

### RETAIL

- 26 WholeFoods
- 27 Walgreens
- 28 Target

### HOTEL

- 29 Intercontinental
- 30 Sheraton Grand
- 31 The Gwen
- 32 Hyatt Regency
- 33 Swissotel
- 34 Trump Intl. Hotel & Tower
- 35 Marriott
- 36 Embassy Suites Hotel
- 37 Loews Hotel
- 38 London House
- 39 The Langham
- 40 Kimpton Hotel Palomar
- 41 Radisson Blu Aqua Hotel AMC

### ENTERTAINMENT

- 19 River East 21
- 20 Lucky Strike Lanes
- 21 Navy Pier
- 22 LA Fitness
- 23 Planet Fitness
- 24 AMC DINE-IN 600 N. Michigan
- 25 Pinstripes

WT - Water Taxi





**[www.nbctower.com](http://www.nbctower.com)**

**ERIC MYERS**

+1 312 881 7017

[eric.myers@transwestern.com](mailto:eric.myers@transwestern.com)

**KATIE STEELE**

+1 312 881 7062

[katie.steele@transwestern.com](mailto:katie.steele@transwestern.com)

